

*Step-by-step guide*

# **ADESA<sup>®</sup>** **LIVEBLOCK<sup>®</sup>** *Simulcasting Worldwide*

**BIDDING**



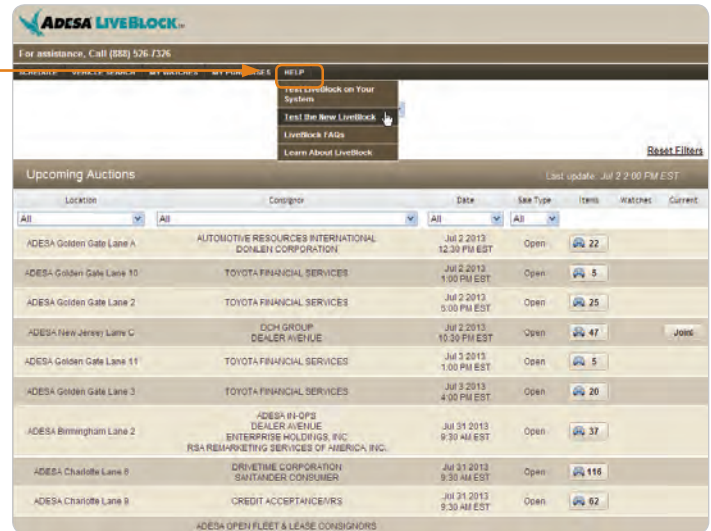
**ADESA.COM**



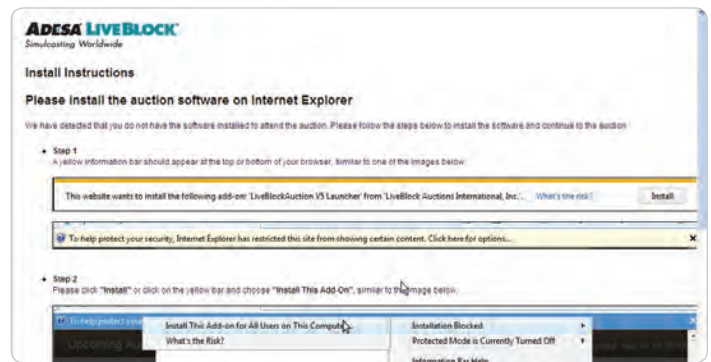
## GETTING STARTED

### CHECK TECHNICAL REQUIREMENTS

- Click HELP from the main navigation, then click TEST THE NEW LIVEBLOCK.



- If you have never installed the LIVEBLOCK bidding interface, you may be prompted to install the LIVEBLOCK bidding interface. A new window will open with installation instructions.



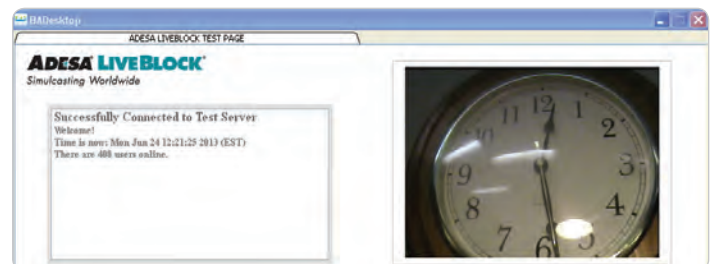
- Click OK to launch the test bidding interface.



**NOTE:** This may take several minutes to verify your system settings.

- If the test is successful, you will hear audio and see video of a clock.

**NOTE:** Contact Customer Connection at 888-526-7326 if you have any questions with the install process.



## BIDDING ON LIVEBLOCK

### 1. SALE CHECK-IN

- Click JOIN! from the SCHEDULE page or RUN LIST to join a live sale.

| Location                  | Consignor  | Date                       | Sale Type | Items | Watchers | Current |
|---------------------------|--|----------------------------|-----------|-------|----------|---------|
| ADESA Las Vegas Lane 1    | ADESA Open Fleet & Lease Consignors  | Dec 27 2011<br>9:30 AM EST | Open      | 32    | 99       | Join!   |
| ADESA San Antonio Lane 2  | ADESA Open Fleet & Lease Consignors<br>Fifth Third Bank<br>Toyota Financial Services | Dec 27 2011<br>9:30 AM EST | Open      | 10    |          | Join!   |
| ADESA Jacksonville Lane D | ADESA In-Ops   | Dec 27 2011<br>9:45 AM EST | Open      | 1     |          |         |
| ADESA Great Lakes Lane 1  | Honda Finance  | Dec 27 2011<br>9:00 AM EST | Closed    | 89    |          |         |
| ADESA Lexington Lane 3    | Dealer Avenue  | Dec 27 2011<br>9:00 AM EST | Open      | 5     |          |         |
| ADESA Lexington Lane 2    | Dealer Avenue  | Dec 27 2011<br>9:00 AM EST | Open      | 7     |          |         |
| ADESA Little Rock Lane 6  | ADESA In-Ops   | Dec 27 2011<br>9:00 AM EST | Open      | 14    |          |         |

NOTE: If you represent multiple dealerships, you will see a pop-up window to select a dealership. This will be your default dealership when you watch additional lanes.

Please choose a dealership you would like to represent.

NOTE: You can change your dealership at any time by selecting the 'Bidding As' link on each lane.

| Bid Badge                      | Dealership Name | Auction Access ID |
|--------------------------------|-----------------|-------------------|
| <input type="radio"/> 89224450 | ADESA Motors    | 5000000           |
| <input type="radio"/> 89392644 | Chester Motors  | 5000000           |
| <input type="radio"/> 89009362 | Test Auto       | 5000000           |

Please contact Customer Connection at 888-526-7326 for assistance.

### 2. OVERVIEW OF LIVEBLOCK BIDDING INTERFACE

The bidding interface is divided into 3 sections:

- Main bidder: This section displays live bidding with video and audio.
- Upcoming vehicles: This section displays upcoming vehicles for the sale in the main bidder.
- Mini-bidders: This section displays additional watched lanes with live bidding.

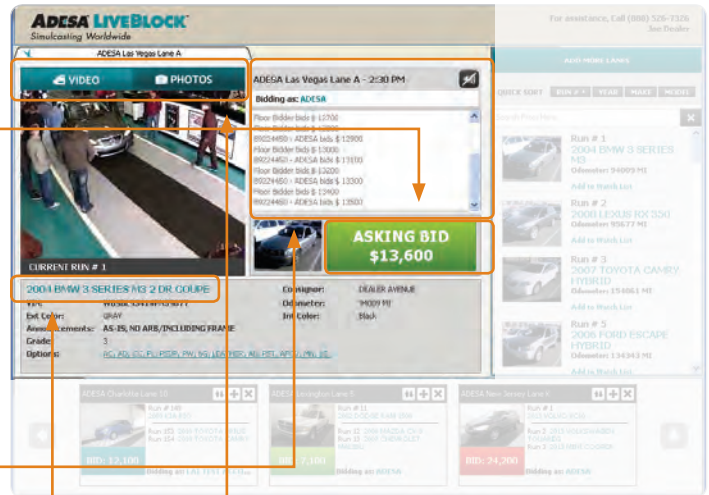
The screenshot shows the ADESA LIVEBLOCK interface. The main bidder section displays a video of a car auction with an 'ASKING BID \$13,600' overlay. The 'UPCOMING VEHICLES' section lists several cars for sale. The 'MINI-BIDDERS' section shows three smaller bidding windows for other lanes.

NOTE: Anything in teal is a clickable link to more information.



### 3. USING THE MAIN BIDDER

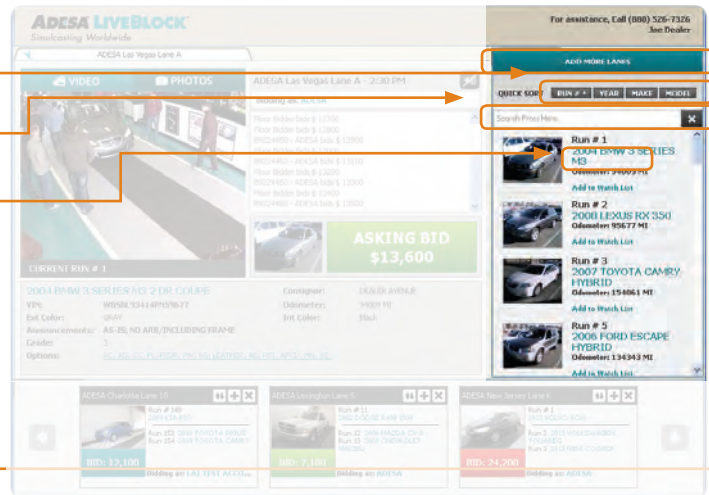
- Bid on vehicles by clicking the ASKING BID button. Your bid will be sent to the auction block and integrated with bids from the floor.
- The ASKING BID button lets you know the status of your bid.
  - **Gray**—Bidding has not started.
  - **Teal**—Bidding has started, you are not participating.
  - **Green**—You are winning the bid.
  - **Red**—You have been outbid.
- The bid history area displays all bidding activity. If your bid is successful, your dealership name and bid amount will appear. Also watch this area for special announcements.
- Quickly toggle between live auction video and vehicle photos. Scroll through photos, or click ENLARGE to view a larger image.
- To view additional vehicle details, click the vehicle description.



**NOTE:** If you represent multiple dealerships, click the BIDDING AS link to quickly change dealerships.

### 4. VIEW UPCOMING VEHICLES

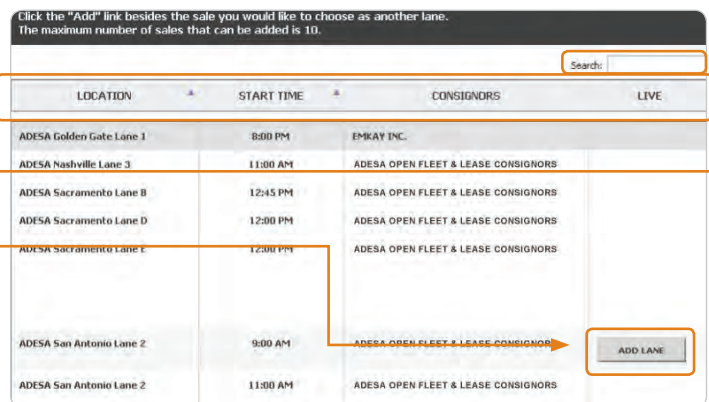
- Sort upcoming vehicles by clicking the run, year, make or model buttons.
- Enter free form text to quickly search for a vehicle.
- You can build your WATCH LIST by clicking ADD TO WATCH LIST.



**NOTE:** Vehicles in your WATCH LIST are shaded. And, your AUTOBIDS will be displayed here.

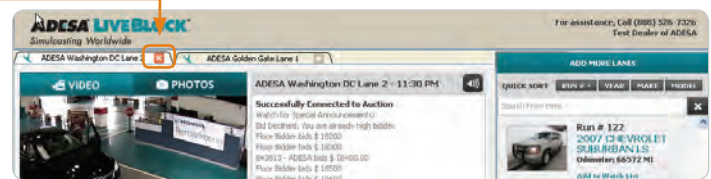
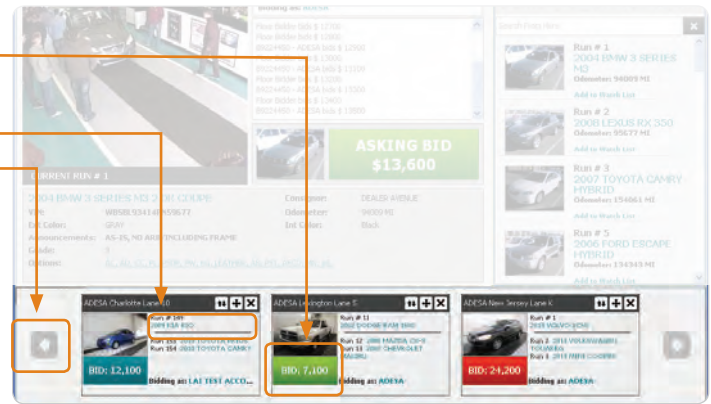
### 5. USING THE MINI-BIDDERS

- Click the ADD MORE LANES button from the upcoming vehicles section to bid in up to 10 additional lanes.
- Sort lanes by location, start time or by sales already live in progress.
- Enter free form text to quickly search for a specific lane.
- Click the ADD LANE button to add the lane to your mini-bidder.



### USING THE MINI-BIDDERS (CONTINUED)

- Click **BID** to bid directly from your mini-bidder.
- Click on the vehicle information to view additional vehicle details.
- Click the arrows to scroll through your watched lanes.
- Use the icons to manage your mini-bidder lanes.
  - Swaps the mini-bidder with the main bidder.
  - Brings the mini-bidder up to a new tab where you can quickly toggle to view lanes in the main bidder.
  - Closes the mini-bidder.
- Click to move the lane from a tab back down to a mini-bidder.

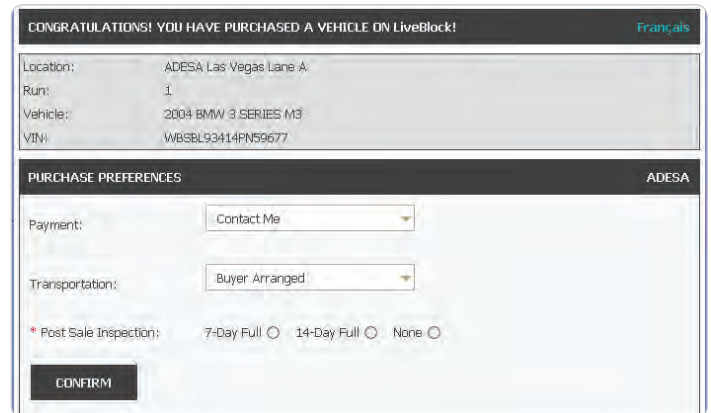


**NOTE:** If you represent multiple dealerships, click the **BIDDING AS** link to quickly change dealerships.

### SALE CONFIRMATION

- After you have purchased a vehicle, you can select your payment, transportation and post-sale inspection preferences.

**NOTE:** Preferences for your dealership will be saved for future purchases.



### FOR MORE INFORMATION

For more information, please visit the ADESA Help site at [www.help.ADESA.com](http://www.help.ADESA.com)

### QUESTIONS?

**CALL:** Customer Connection at 888-526-7326

**EMAIL:** [customerconnection@adesa.com](mailto:customerconnection@adesa.com)

**CHAT:** Live on [www.ADESA.com](http://www.ADESA.com)

**GET HELP:** [help.ADESA.com](http://help.ADESA.com)