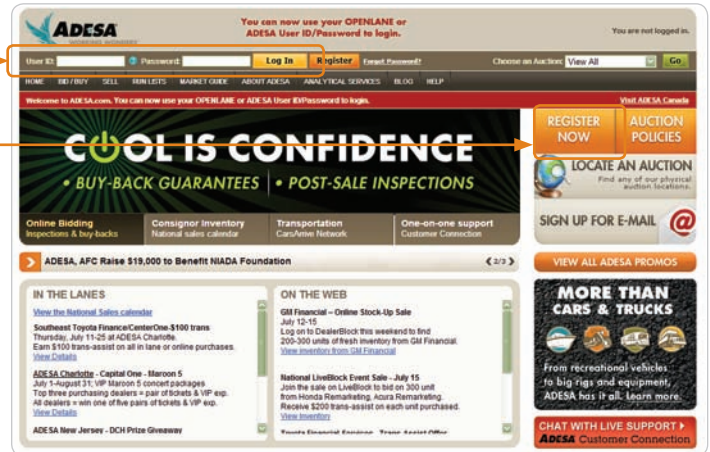


1. LOG ON VIA ADESA.COM

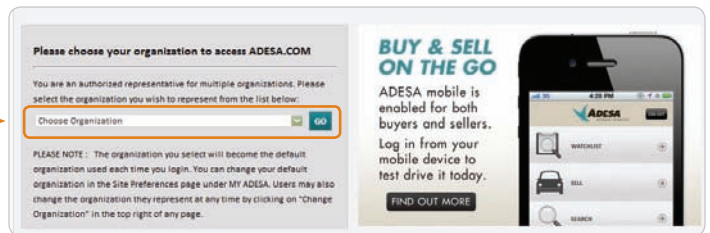
- Enter your User ID and Password.

IF YOU ARE NOT YET REGISTERED:

- Click REGISTER NOW.
- Complete and submit the online registration form; Customer Connection will then contact you to complete your registration information.



NOTE: Effective July 2013, for users associated to more than one organization, you will be prompted to choose an organization at your first log in. This will set the default for all subsequent logins. Users can change the default organization by accessing MY ADESA in the main navigation and then SITE PREFERENCES in the sub-navigation bar.



2. BUY VEHICLES ONLINE

There are three ways to start searching for vehicles:

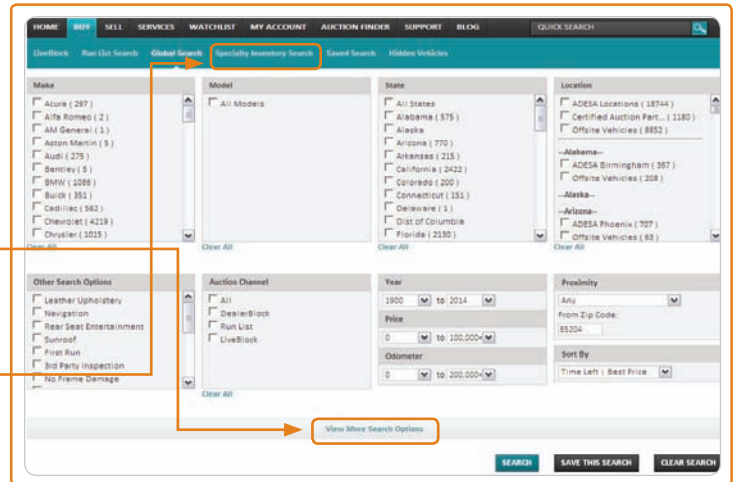
- For all auction channels (DealerBlock, LiveBlock and RunLists), click on BUY on the main navigation bar then GLOBAL SEARCH in the subnavigation bar.
- For customized searches, use the QUICK SEARCH feature on the main navigation bar. You can enter commonly used search terms like year, VIN, make, model, etc.
- For specific auction channels, click on the RUNLISTS, LIVEBLOCK OR DEALERBLOCK button.



NOTE: For QUICK SEARCH, you can also enter a combination of these search terms or you can enter free-form text for your search criteria. An example of free form text would be to enter "RED 2002 MUSTANG."

3. SEARCH FOR VEHICLES

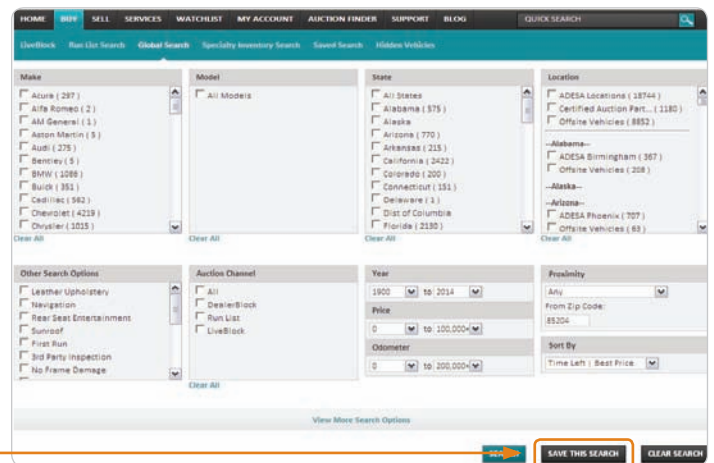
- Select search criteria such as make, model, year, etc. You can also search by auction location and auction channel.
- Click on VIEW MORE OPTIONS to customize your search even further.
- For additional selections, click SPECIALTY INVENTORY SEARCH in the subnavigation bar for inventory such as motorcycles, boats and recreational vehicles.



4. SAVE YOUR SEARCH CRITERIA

You can save your search criteria for future use.

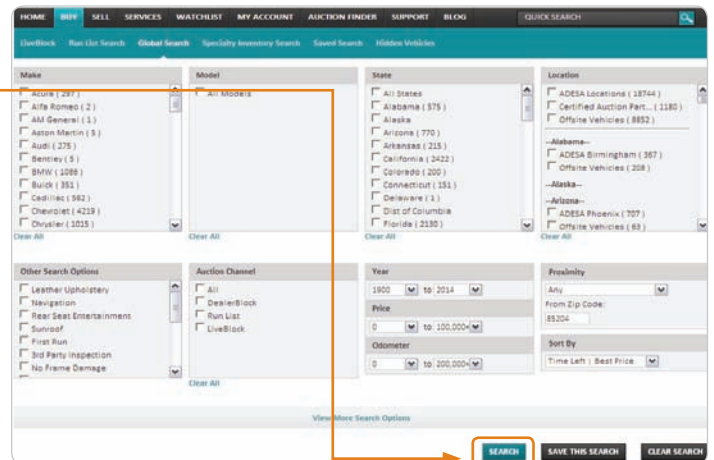
- To store your search options, click SAVE THIS SEARCH.



5. VIEW SEARCH RESULTS

Your results will be displayed on the SEARCH RESULTS PAGE.

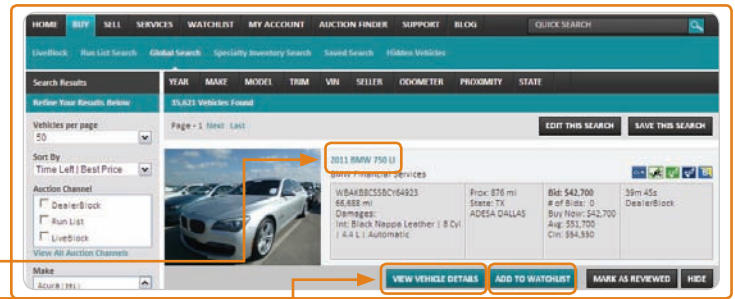
- Click on SEARCH for more details.



6. VIEW VEHICLE DETAILS

You can review more information about the vehicle, place a bid or make a purchase.

- After clicking on a vehicle description from the SEARCH RESULTS PAGE, you will arrive at that unit's VEHICLE DETAILS PAGE.
- Click the YEAR/MAKE/MODEL/SERIES description link of the unit to view the VEHICLE DETAILS PAGE.
- Or Click on the VIEW VEHICLE DETAILS button.



7. ADD TO WATCH LIST

- To monitor a vehicle you are interested in, click ADD TO WATCHLIST.

FOR MORE INFORMATION

For more information, please visit the ADESA Help site at www.help.ADESA.com

QUESTIONS?

CALL: Customer Connection at 888-526-7326

EMAIL: customerconnection@adesa.com

CHAT: Customer Connection on www.adesa.com