

BRIDGE CONSTRUCTION

155th Street Closure

Friday, February 10th to Friday, December 1st

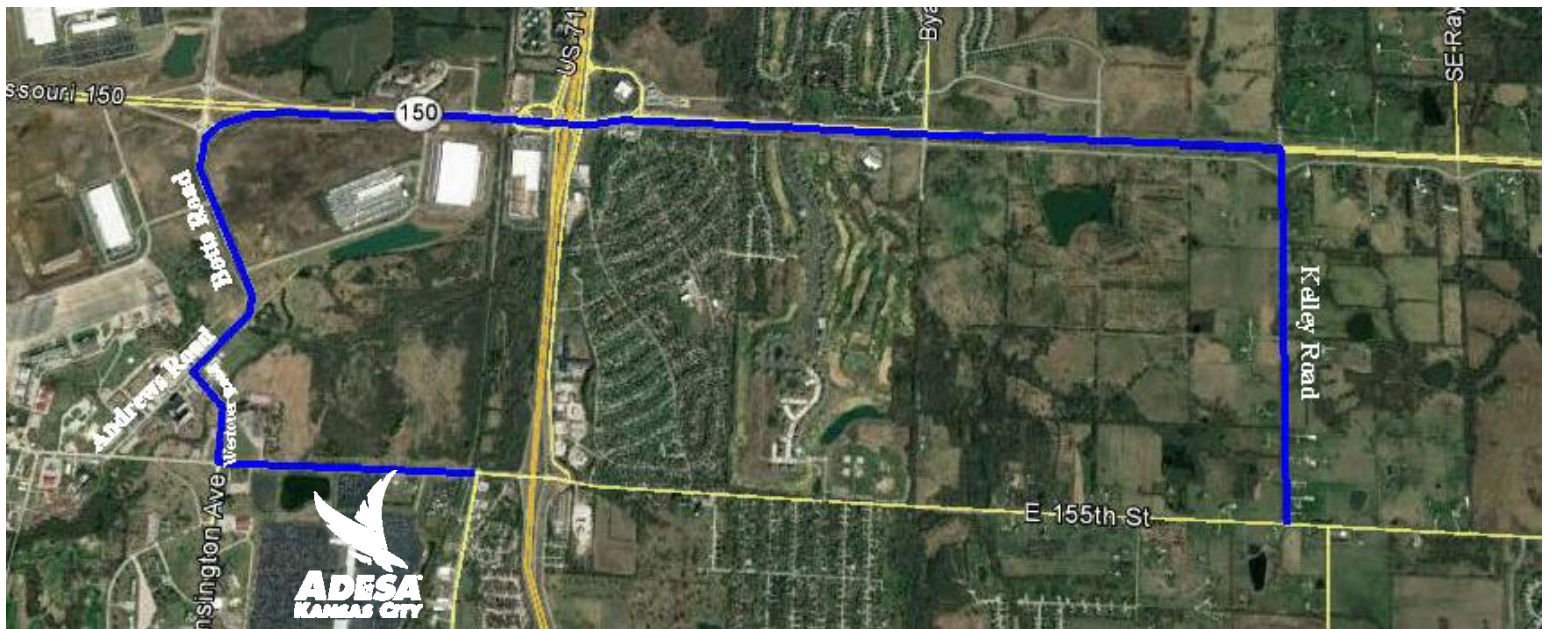
155th Street will be Closed!

West Bound Detour

Kelley Road North → Route 150 West → Botts Road South
→ Westover/Andrews Road South → 155th Street

East Bound Detour

Andrews/Westover Road North → Botts Road North →
Route 150 East → to Kelley Road South → 155th Street



ADESA Kansas City
15511 ADESA Dr.
Belton, MO 64012
816-525-1100
Fax: 816-525-4714
ADESA.com/kansascity

