

VW CREDIT, INC.

TDI Sale Documents

May 17, 2017

TDI Documents

All documents and stickers associated with the vehicle you have purchased must be provided to the retail buyer of the vehicle.

Please do not remove any of the items from the vehicle.

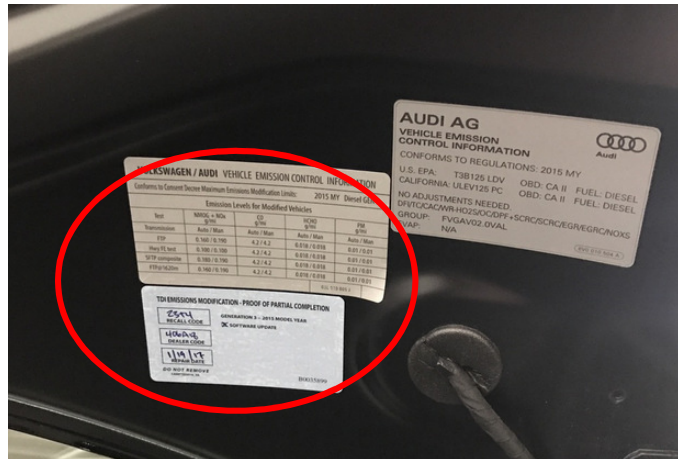
If you need replacement copies of any items, please contact the auction where the vehicle was purchased.



TDI Documents

VECI and Proof of Completion Labels

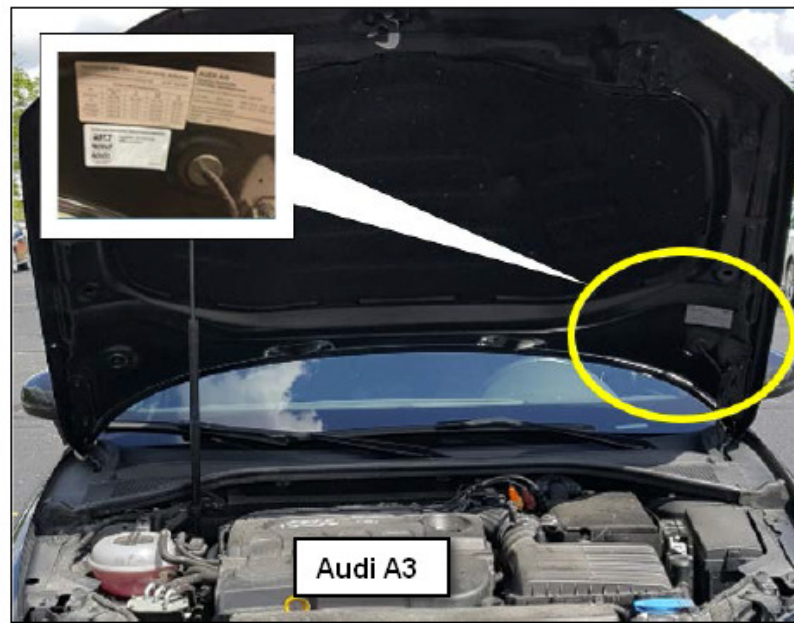
After the vehicle has had the AEM completed, an updated VECI and a proof of completion label will be applied.



Vehicle Repair Process

VECI and Proof of Completion Labels

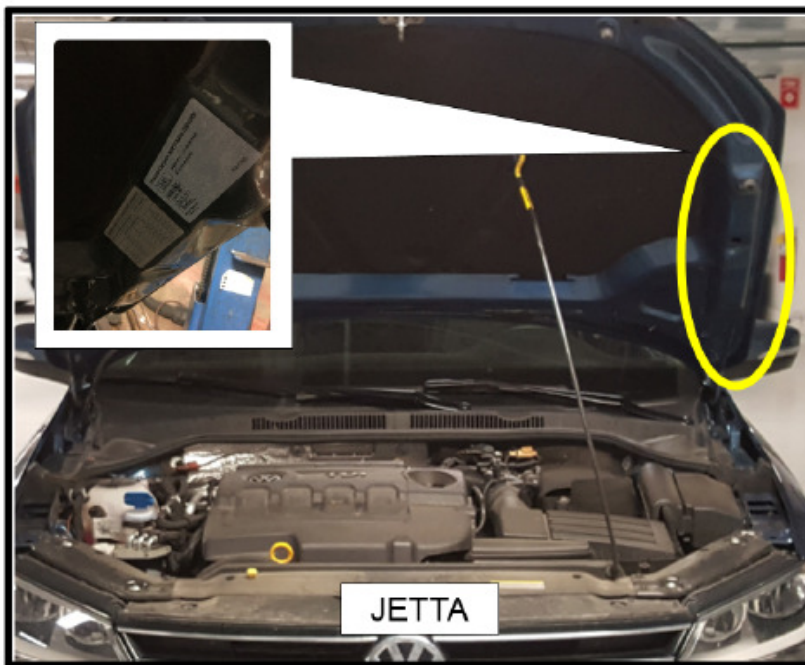
Label placement is different for each model. Please refer to the correct model for correct location.
Previous VECI labels should not be covered by the newer ones.



Vehicle Repair Process

VECI and Proof of Completion Labels

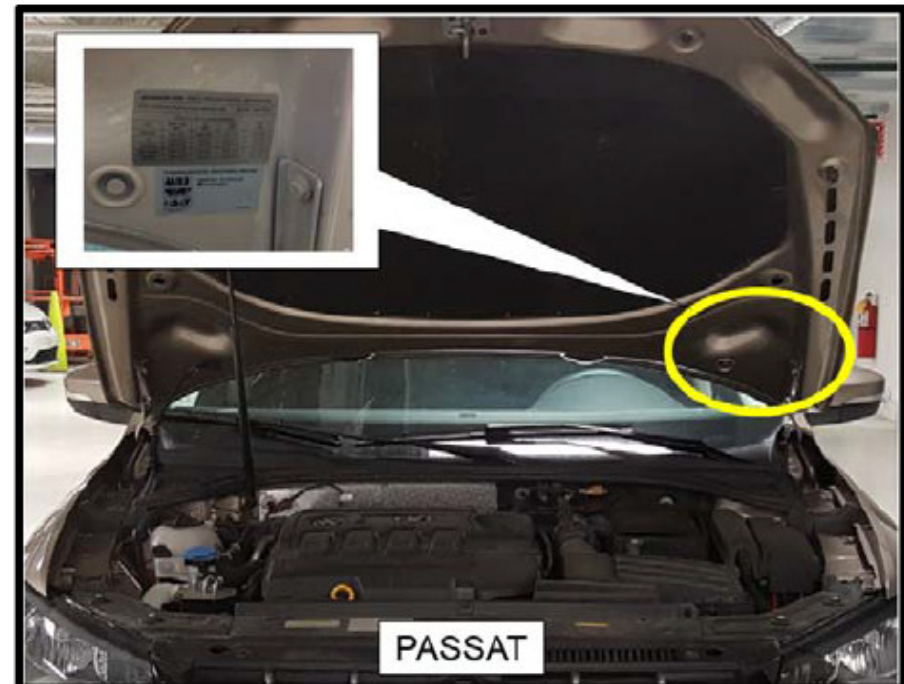
Label placement is different for each model. Please refer to the correct model for correct location. Previous VECI labels should not be covered by the newer ones.



Vehicle Repair Process

VECI and Proof of Completion Labels

Label placement is different for each model. Please refer to the correct model for correct location. Previous VECI labels should not be covered by the newer ones.



Vehicle Repair Process

EPA “Mini-Monroney” Label

During the AEM process, an updated EPA Fuel Economy label (“Mini-Monroney”) must be affixed to the rear driver’s side window.

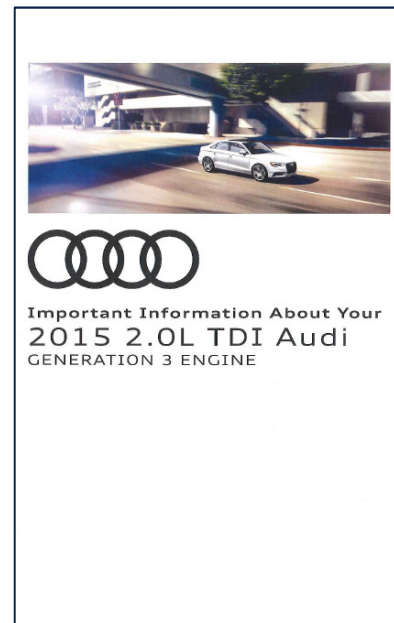
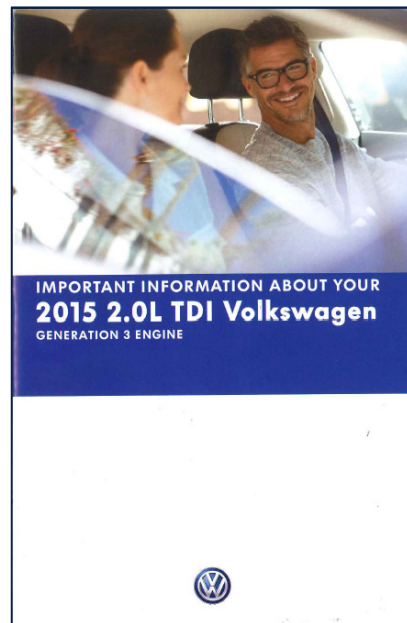
- The full label with the red border must be used.
- Labels are VIN specific.



Pre-Sale Items

2015 2.0L TDI (Generation 3) Booklet

The AEM booklet is found in the glovebox of the vehicle.

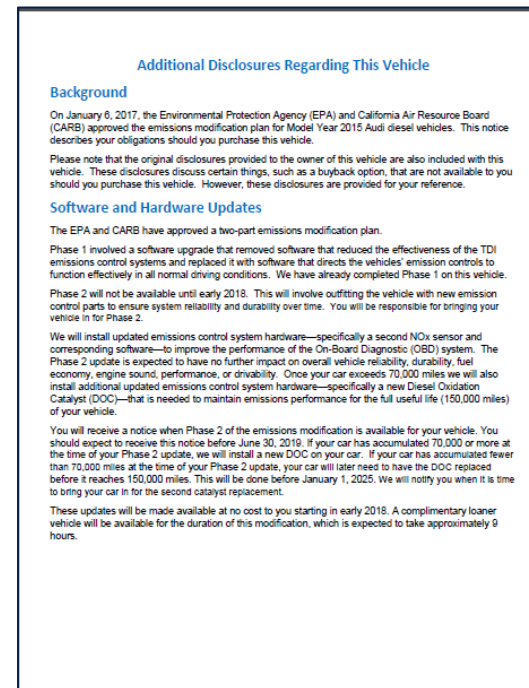
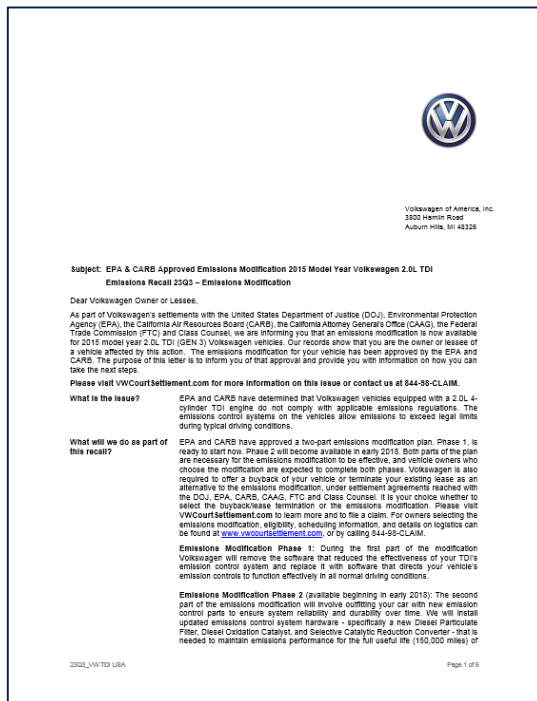


Pre-Sale Items

Disclosure Letters

Two (2) letters will be in the glovebox of the vehicle.

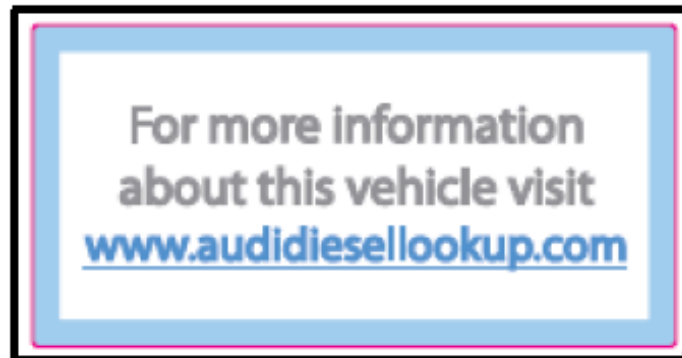
- Emission Modification Letter – 6 pages
- Disclosure Letter – 3 pages



Pre-Sale Items

Permanent Window Sticker

A permanent window sticker will be present on the front driver-side window on the lower rearward interior portion of the window.



Document Placement Map

